

Intrauterine Insemination with Husband's sperm



COPENHAGEN FERTILITY CENTER

Copy right SL-Design



Patient Information

Intrauterine insemination with husband semen is used in the following cases:

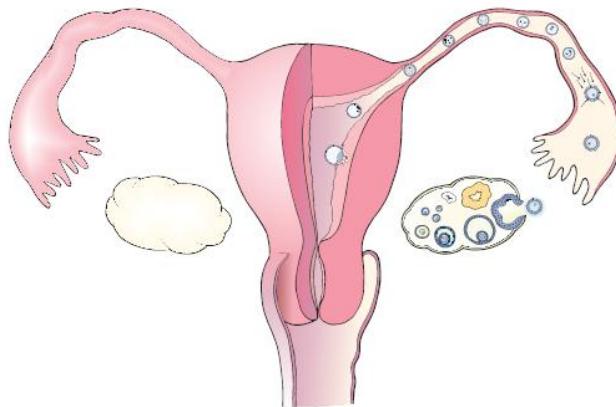
- Your infertility is caused by a moderate poor quality of semen
- Unexplained infertility
- Irregular menstruation

The chances of pregnancy are approximately 15 percent per treatment.

The treatment:

The following issues will be discussed with you:

- That the woman is ovulating by herself or assisted by hormone treatment.
- The woman has a normal uterus and normal passage through the egg tubes.
- The woman has been examined for chlamydia, cell changes and rubella.
- There must be at least one million highly activated sperm cells after preparation.
- The patient and her husband is fully informed about the risk and consequences of the treatment



Kindly provided by Organon Denmark

The illustration shows a normal functioning uterus, where there is passage through the tubes and the woman ovulates and the uterus is able to receive the fertilised egg.



Patient Information

The treatment

The object of The Copenhagen Fertility Center's procedure for insemination is to at inducing one single ovulation. Therefore we often administrated the following:

- Clomovid tablets (Clomid, Pergotime®). Take two tablets daily from day 3 to 7 of your cycle. Both days included.
- Very seldom we used from day 8 to day 12 of your cycle, take one injection of Puregon®/Gonal F® daily. Both days included.

Both preparations stimulate the growth of the egg follicle. An ultrasound scan of the egg follicles determines the best time for insemination. Ovulation is induced with Ovitrelle® when the follicle exceeds a diameter of 18 mm. Insemination is undertaken on the next day, and repeated on the day after that, if necessary.

The daily treatment schedule.

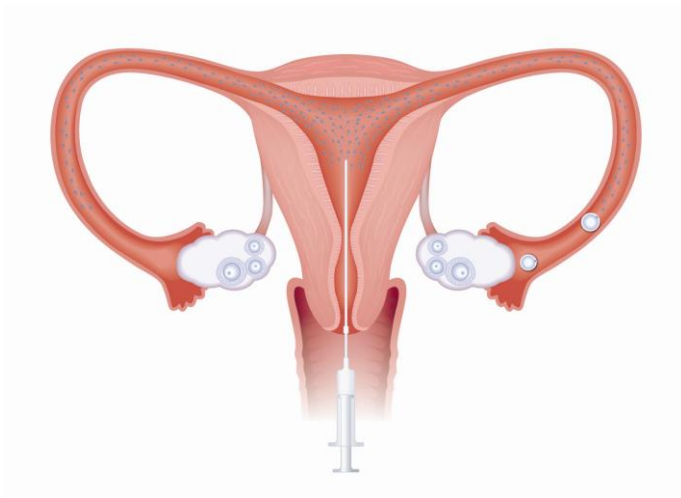
One the first days of your menstrual cycle you call us and book an appointment for an ultrasound scan. The scan will take place on the 12th day of your cycle. Our telephone number is +45 33 25 70 00.

From day three to day seven of your cycle (including both days), take two Clomivid tablets (Clomid®, Pergotime®).

Sometimes yu wil be further advised to take from the eight to the twelfth day of your cycle (including both days), take one ampoule of Puregon®/Gonal-f® daily.

On the twelfth and thirteenth day you carry out an ovulation test, using morning urine.

If the test is **positive**, please call us at +45 33 25 70 00. You will be inseminated on the following day. If this test is positive, we will only carry out one insemination.



Kindly provided by Ferring A/S

If the test is **negative**, you must make an appointment at the Copenhagen Fertility

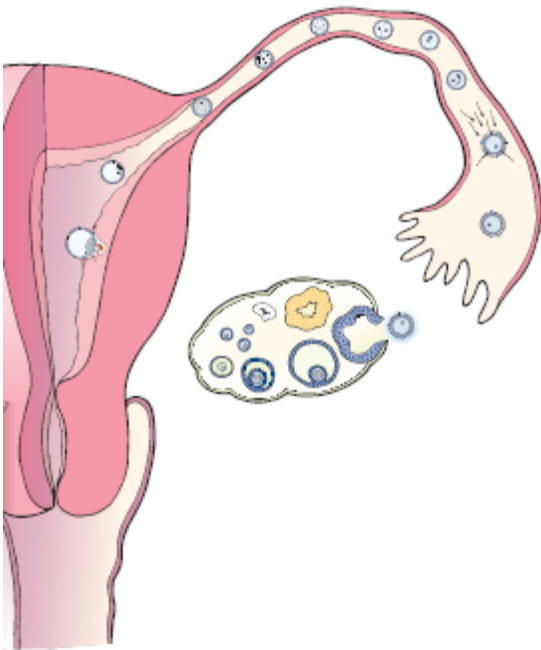


Patient Information

Centre for the thirteenth day of your cycle. You will be scanned. Provided the scan reveals at least one egg follicle exceeding 18 mm and not more than 3 egg follicles measuring 17 mm, you must inject Ovitrelle® to induce ovulation.

You will be inseminated twice: On the next day and the day after that. The second insemination will be carried out after your ovulation.

Fertilisation and development of the embryo



Kindly provided by Organon

Fertilisation can take place if sperm cells and eggs are present in the tubes at the same time. When the sperm cells meet the egg, the egg will be fertilised. Then the fertilised egg will move towards the uterus, where it will adhere to the inner wall of the uterus and become a pregnancy. During the time the fertilised egg is moving through the tube it develops from a one cell to a two cell and so forth.



Patient Information

The medical product used and its possible adverse effect.

Clomifen / Pergonal

Function: Stimulates the ovaries, resulting in larger and maturer eggs.

Adverse effects: Transient hot flushes, nausea, blurred sight and headaches. The huge majority of women taking Clomivid, however, have no adverse effects.

Puregon/Gonal-F/Menopur

Function: Stimulates the ovaries, resulting in larger and maturer eggs.

Adverse effect: Local soreness in the area of injection. Risk of hyper-stimulation can occur at high dosages.

Ovitrelle

Function: Matures the eggs in the final stages as well as causing ovulation.

Adverse effect: None of importance – except risk of hyper-stimulation if taken with other hormones.

